

 Department for Business
 Innovation & Skills

 Better
 Regulation
 Delivery Office

Extending Primary Authority to HHSRS

Duncan Johnson





 Department for Business, Innovation & Skills

DEVELOPING RELATIONSHIPS BETWEEN BUSINESS & LOCAL REGULATORS



Primary Authority is the gateway to simpler, fairer and more successful local regulation, based on developing open relationships between councils and businesses

Better Regulation Delivery Office


 Department for Business, Innovation & Skills

AN ESTABLISHED SCHEME



- 855 businesses
- 109 Local Authorities
- >68 000 premises covered
- 18 categories of regulation
- Large extension on 1st October

Better Regulation Delivery Office

Department for Business, Innovation & Skills

WHAT DOES PRIMARY AUTHORITY DELIVER?

<p>Business</p> <ul style="list-style-type: none"> • Reliable regulatory advice • A single point of contact 	<p>Local Regulators</p> <ul style="list-style-type: none"> • More effective and efficient regulation
--	--

Improved protection for citizens

- Improved compliance

Better Regulation Delivery Office

Department for Business, Innovation & Skills

CO-ORDINATION THROUGH PRIMARY AUTHORITY

```

graph TD
    PA[Primary Authority] -- Green --> B[Business]
    PA -- Green --> LA1[Local Authority]
    PA -- Green --> LA2[Local Authority]
    PA -- Green --> LA3[Local Authority]
    B <--> LA1
    B <--> LA2
    B <--> LA3
  
```

Better Regulation Delivery Office

Department for Business, Innovation & Skills

BUSINESS ELIGIBILITY (1) Direct Partnership

A business regulated by more than one local authority

- Premises in multiple local authority areas (for example a landlord with many premises)

Better Regulation Delivery Office

Department for Business, Innovation & Skills

DIRECT PARTNERSHIPS

```
graph LR; Business[Business] <--> PrimaryAuthority((Primary Authority));
```

Better Regulation Delivery Office

Department for Business, Innovation & Skills

BUSINESS ELIGIBILITY (2) Co-ordinated partnership

A business that is part of a group of businesses collectively regulated by more than one local authority, where these businesses 'share an approach to compliance':

- Members of a trade association
- Franchisees
- A group of related companies following the same compliance controls.

Better Regulation Delivery Office

Department for Business, Innovation & Skills

CO-ORDINATED PARTNERSHIPS

```
graph LR; subgraph SharedApproach [Shared approach to compliance]; B1[Business 1]; B2[Business 2]; B3[Business 3]; B4[Business 4]; end; B1 --> CO[Co-ordinator]; B2 --> CO; B3 --> CO; B4 --> CO; CO <--> PA((Primary Authority)); B1 -.-> PA; B2 -.-> PA; B3 -.-> PA; B4 -.-> PA;
```

Better Regulation Delivery Office

Department for Business, Innovation & Skills

HOW CO-ORDINATION WORKS

Primary authorities provide:

- Assured advice to the business
 - Assurance is through notification of proposed enforcement action
- Inspection plans for local authorities
- Support for local authorities
 - Online
 - Troubleshooting issues

Enforcing authorities provide:

- Feedback to the primary authority

Better Regulation Delivery Office

Department for Business, Innovation & Skills

BENEFITS - LARGE LANDLORD SCENARIO

- Landlord has many properties and is well informed
- Planned approach to maintenance and investment
- Primary authority is able to influence business approach
- Landlord can get assurance that approach to issues of interpretation is accepted
 - Certainty
 - Investment

Better Regulation Delivery Office

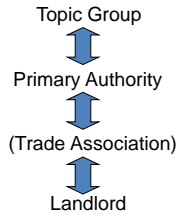
Department for Business, Innovation & Skills

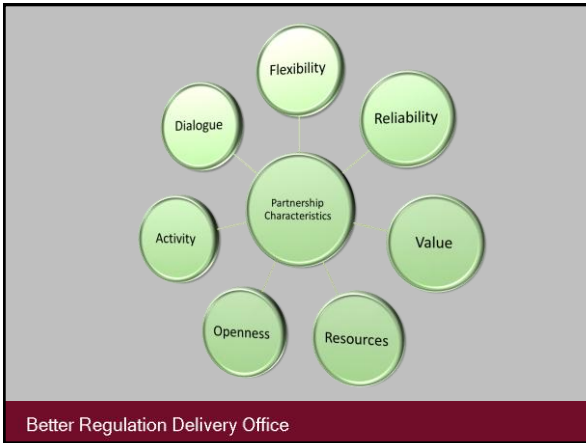
BENEFITS - SMALL LANDLORD SCENARIO

- Landlord has few properties and may not be well informed
- Landlord looks to Trade Association for advice
- Trade Association works with primary authority to develop appropriate support materials
- Standards are clear to landlord and give assurance if complied with

Better Regulation Delivery Office

DEVELOPING ADVICE





FURTHER INFORMATION

www.bis.gov.uk/brdo/primary-authority

Free Primary Authority training courses can be booked via the website

Email: duncan.johnson@brdo.bis.gsi.gov.uk
